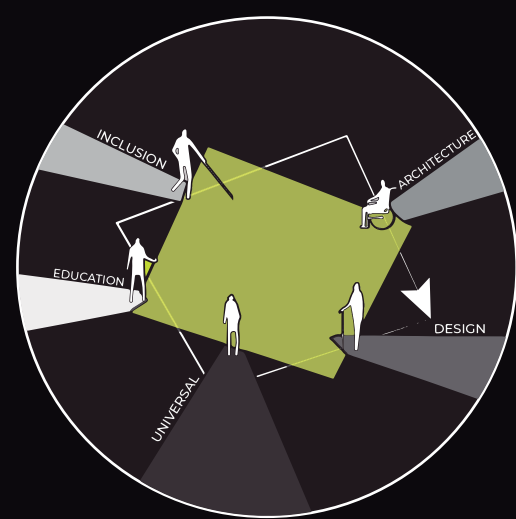


# OUR PROPOSAL

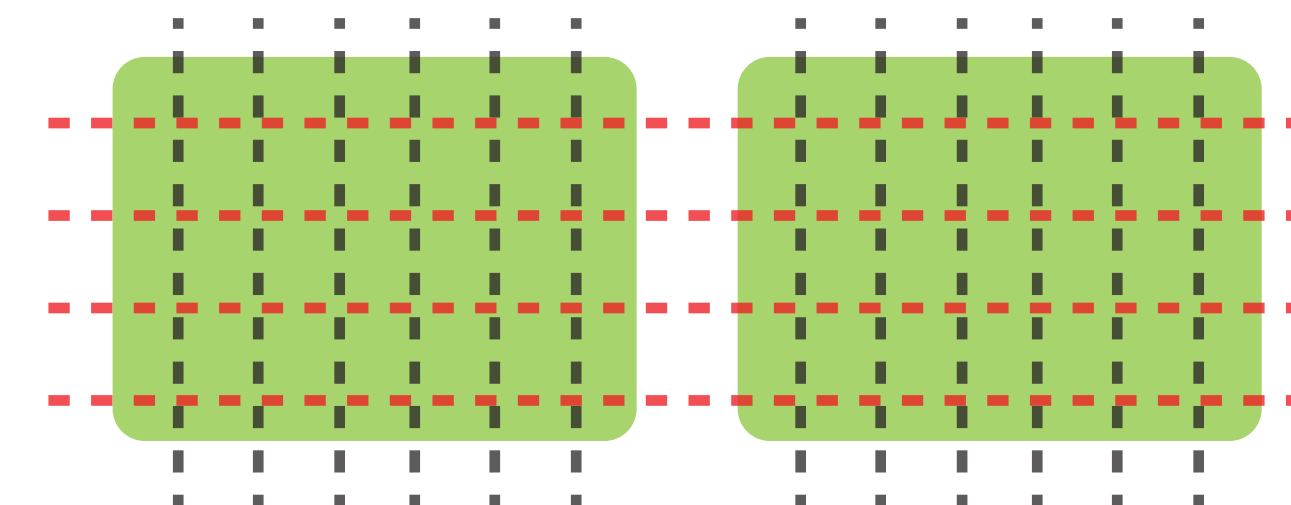
## MASTER PLAN IDEA

Melissa Banguero Home  
Luis Felipe Sanchez



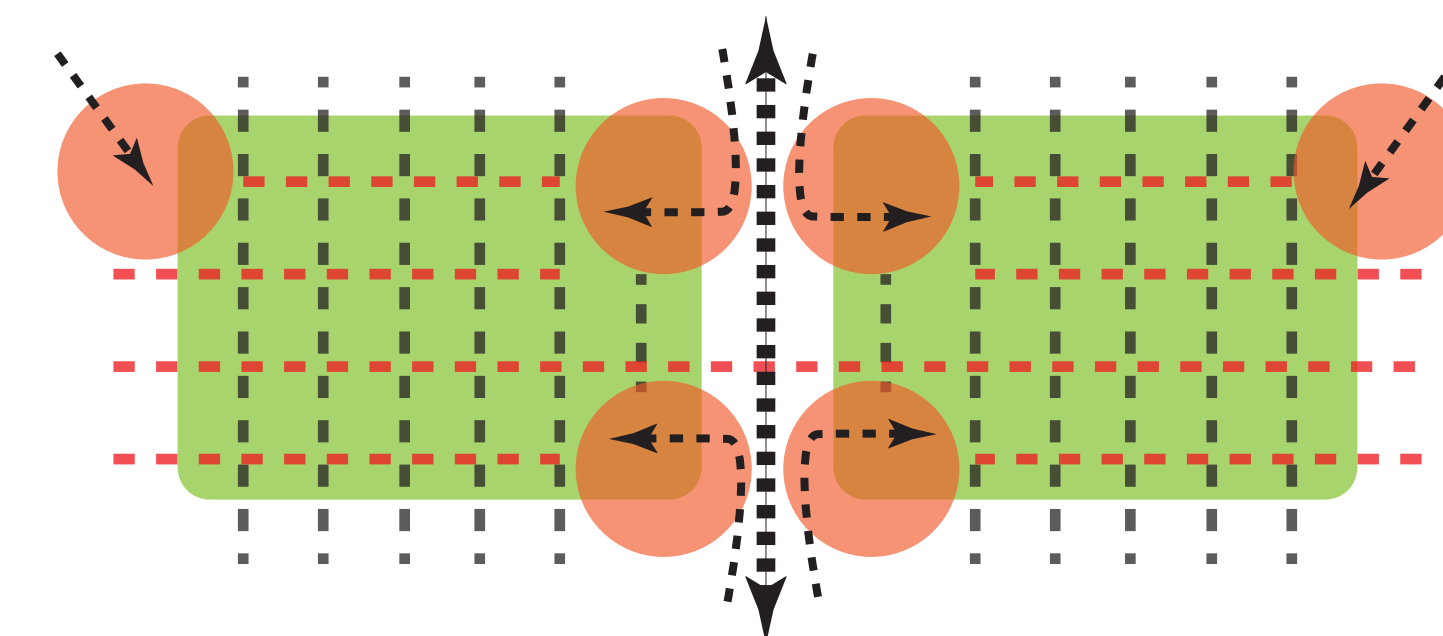
### Organize the area

In order to organize the intervention area we decided to make a "grid" that occupied the whole space. The grid is modulated by squares that measure 5\*5. With this idea we gave an order and also helps to identify later the access, the empty and full spaces and circulations.



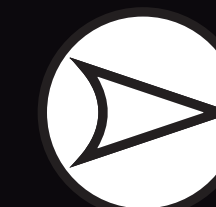
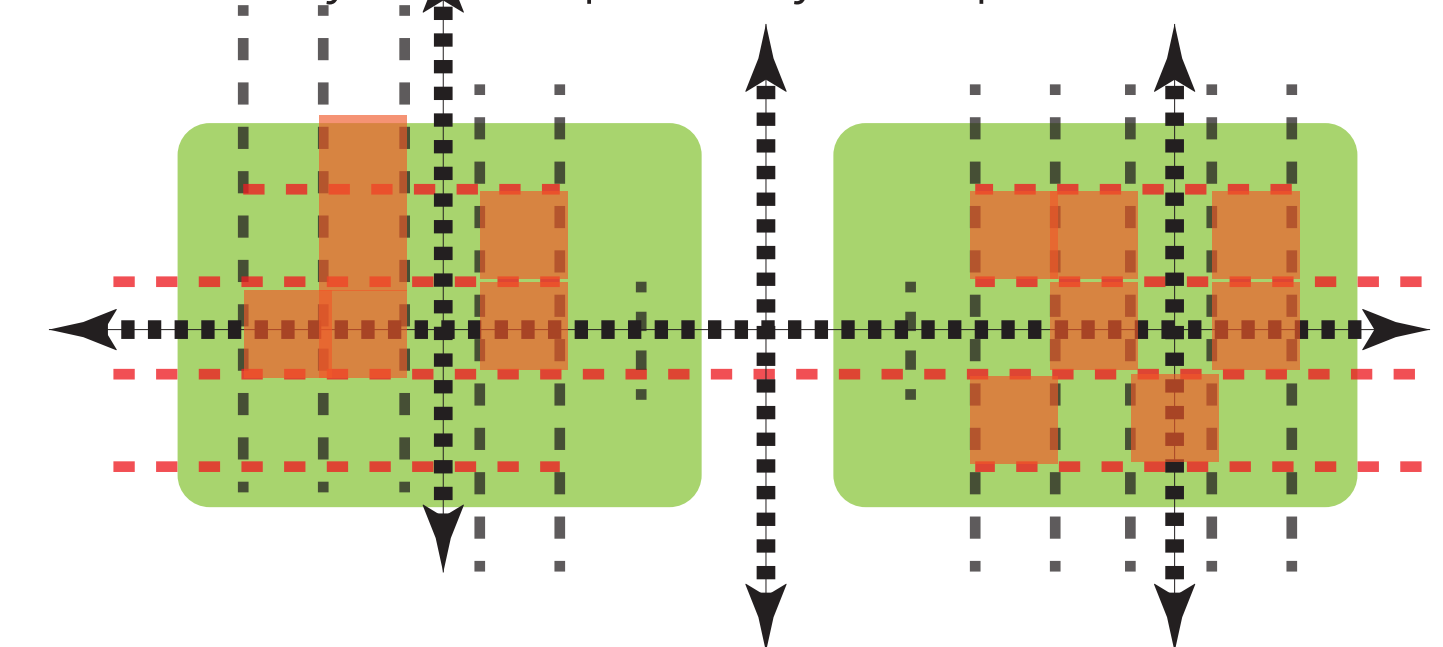
### Set up the space

After knowing how the space will be divided we started to define the accesses and the gathering points according to the context and the analysis.



### Modulate the space

Defining the accesses helps us to determine the modules of our project. Each square of 5\*5 is a module that lately will be design as a indoor or outdoor space. The modules whee organize in the way cirulation is permitted, green areas are gurantee and social spaces are given. Also the this organization follows the site morphology previously analyze. In which courtyard and pathways are part of the blocks.

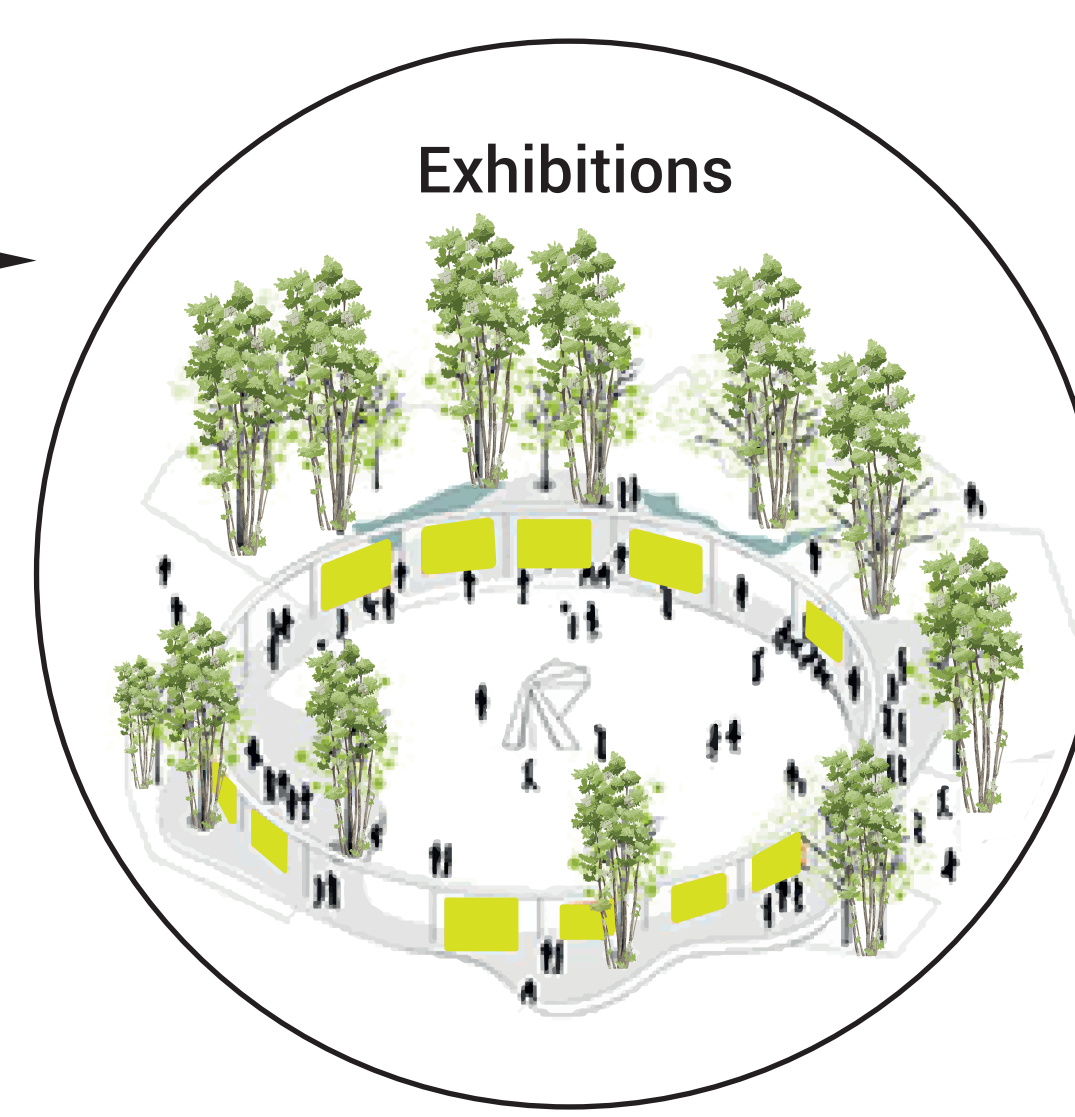
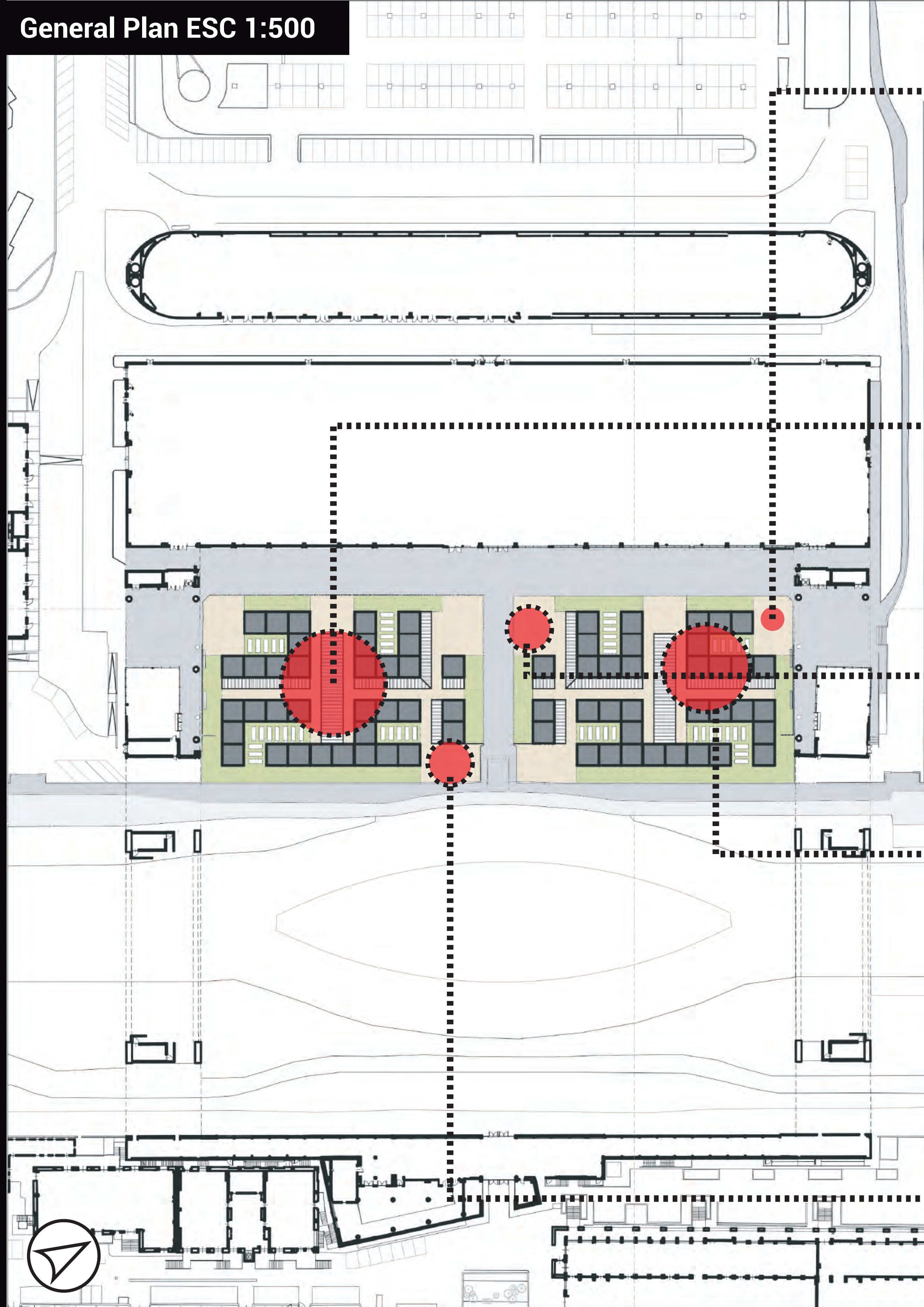




# OUR PROPOSAL

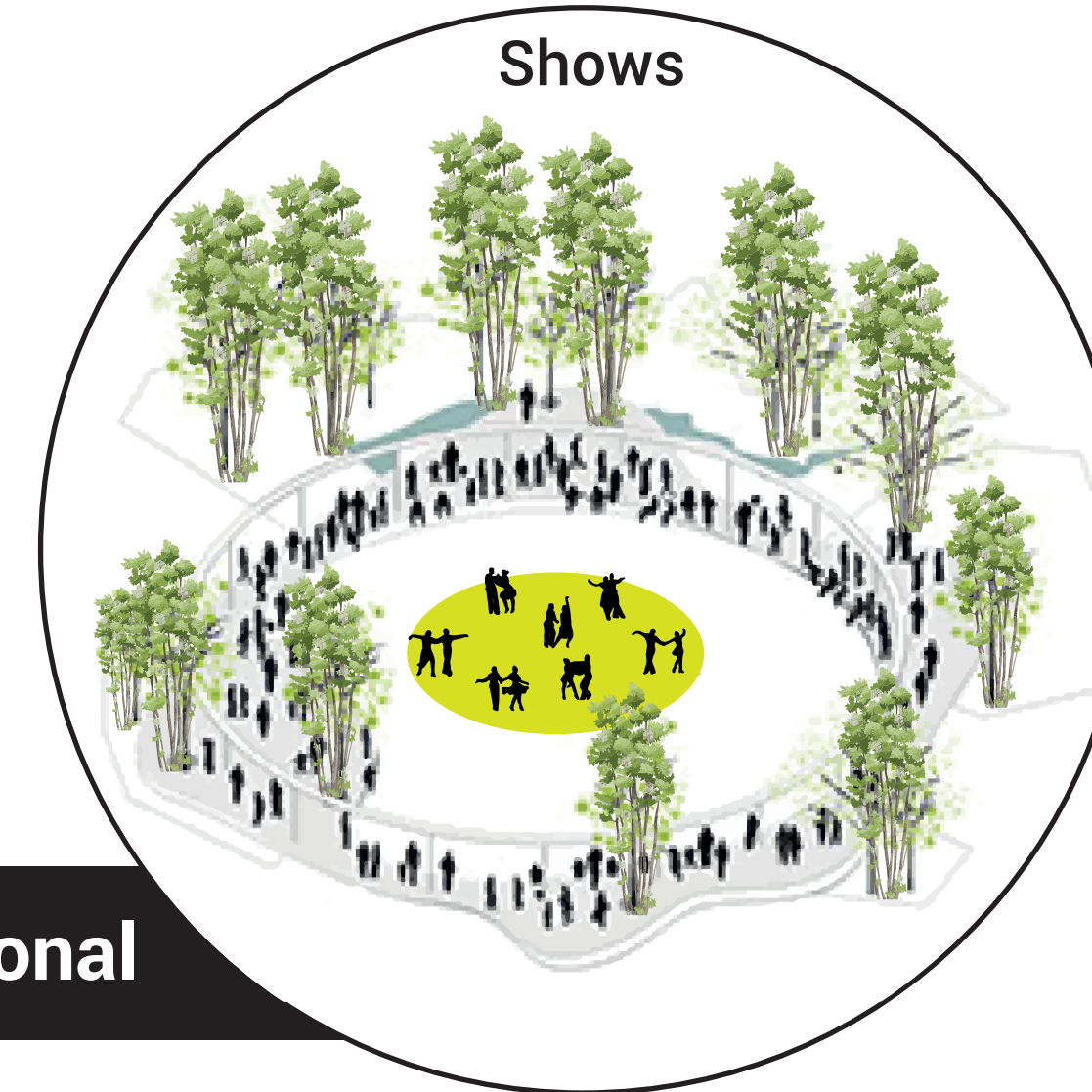
## MASTER PLAN IDEA

General Plan ESC 1:500



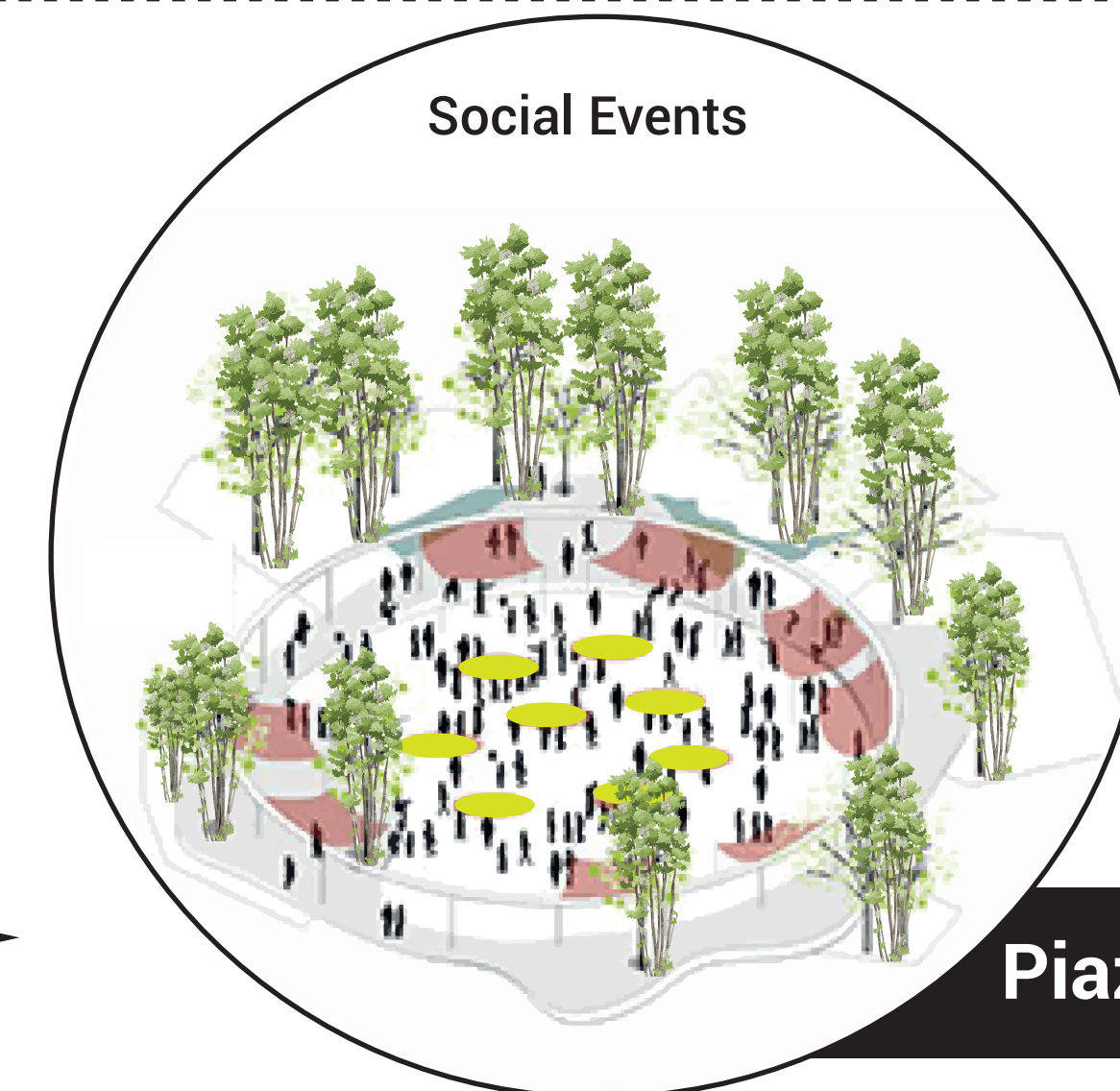
Exhibitions

Gathering Areas



Shows

Multifuntional



Social Events

Piazza



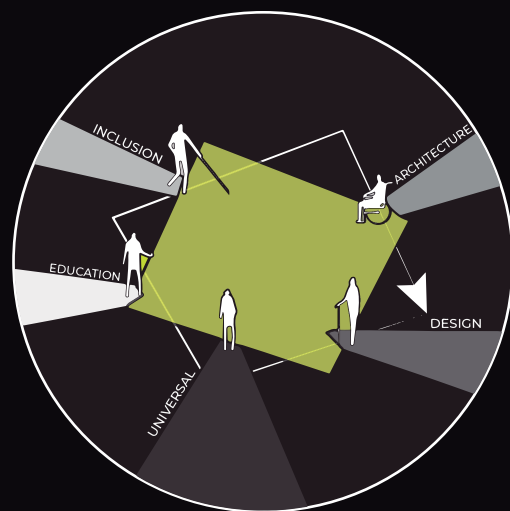
Transition Area



Indoor/Outdoor

Photos from Pontificia Universidad Javeriana  
Inspire schemes from Ballerup City project

Melissa Banguero Home  
Luis Felipe Sanchez



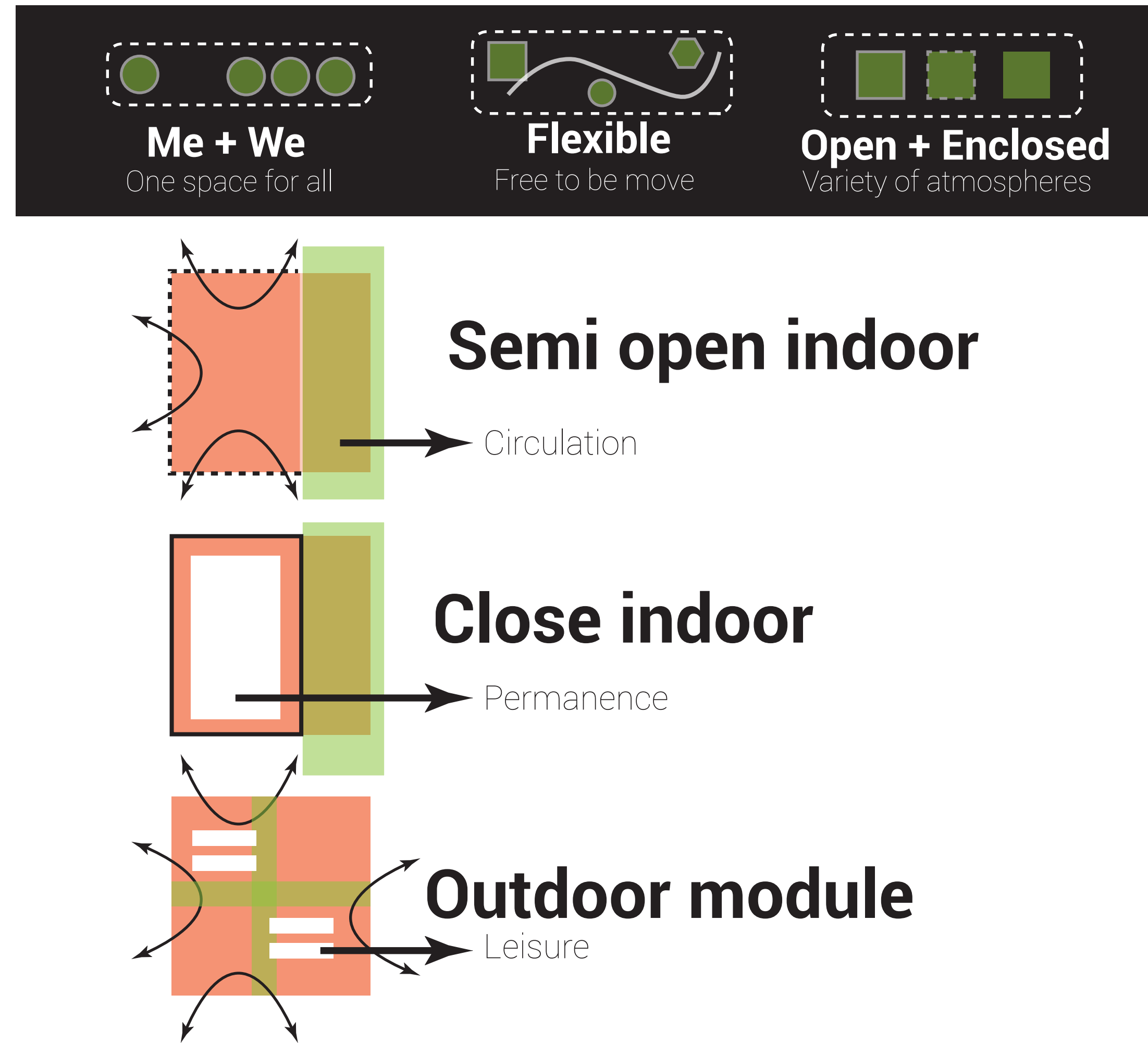


# OUR PROPOSAL

## MASTER PLAN IDEA

### Modules

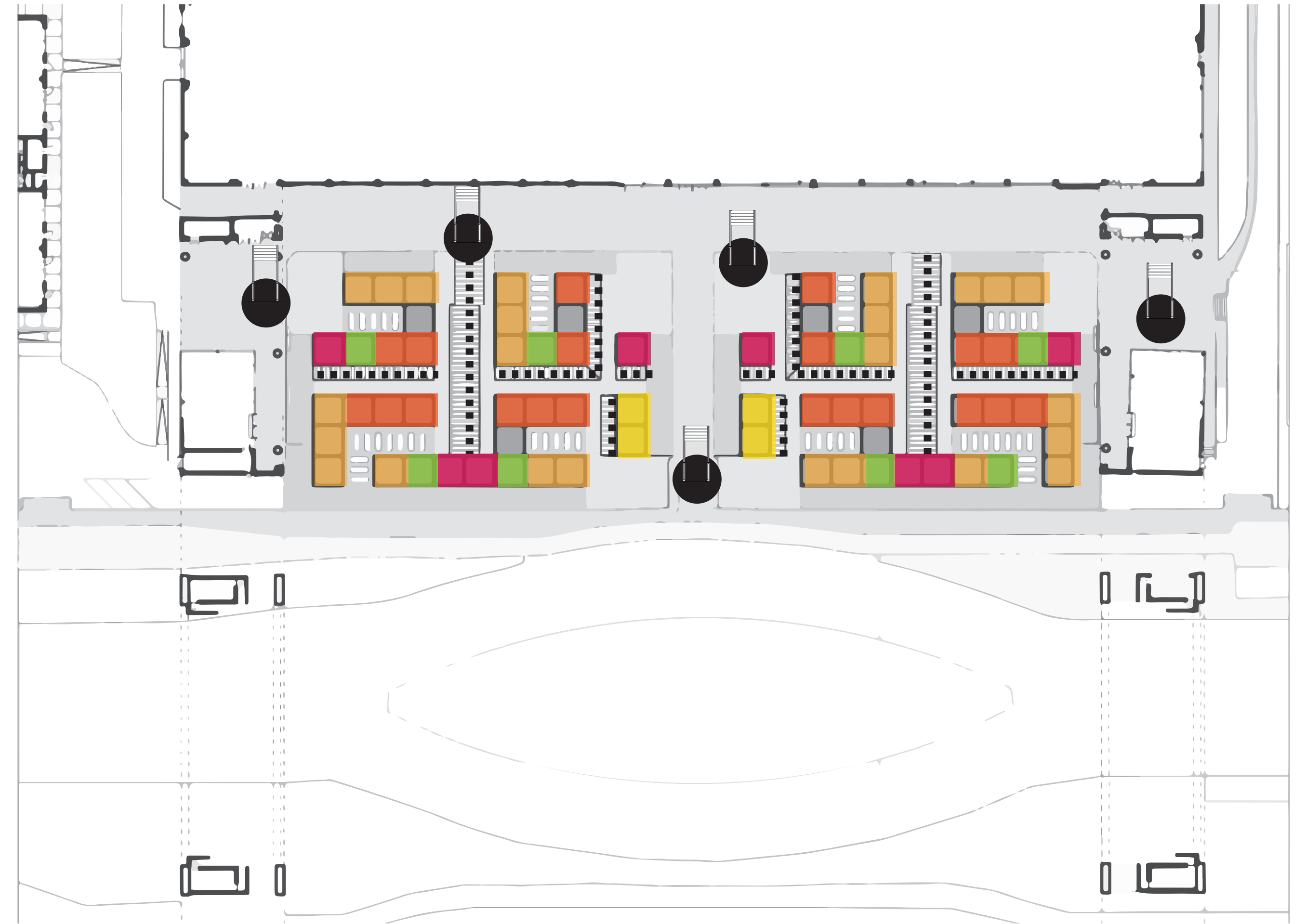
The modules were distributed all over the area and then we thought about the different uses that they can have. The idea is that they permit flexibility of activities, facade and comfort. Semi open spaces are for study areas individual and group, close indoor are for private meeting rooms and the outdoor module is for leisure and transit.



### Zoning

After organizing the modules all over the area. We started to give activities to each module and also to the exterior areas. Knowing the activities and necessities of the potential users the following uses were contemplated for zoning: **Individual and group working, relax/leisure areas, auditorium or meeting area, eating and heating area, bar/cafe/teria and green areas.** Locating the areas depending on the rumor and privacy of each activity.

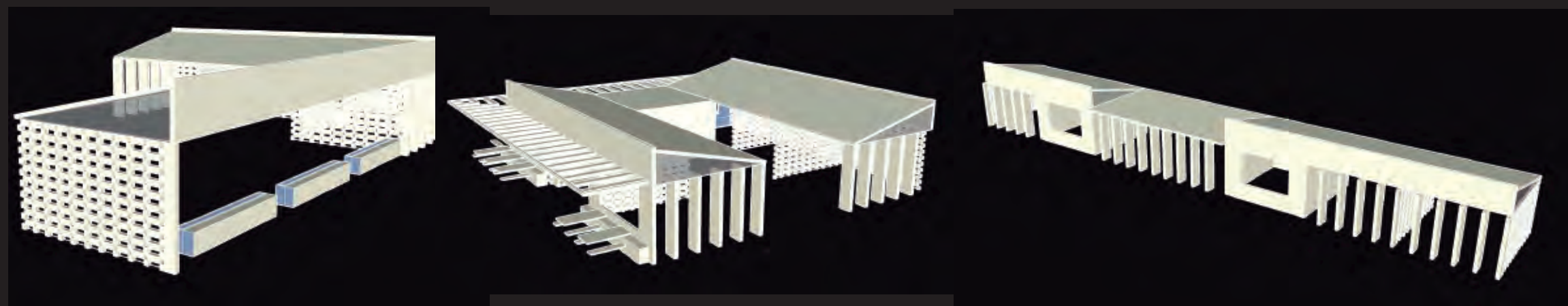
### General Plan ESC 1:500



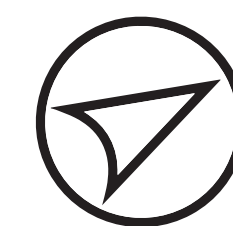
1

2

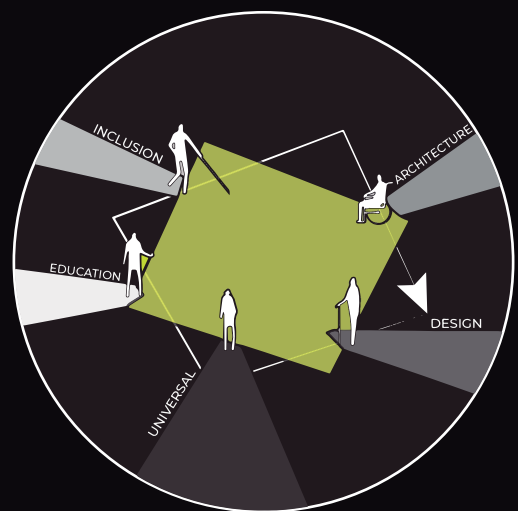
3



Axonometries of the different modules compositions



Melissa Banguero Home  
Luis Felipe Sanchez

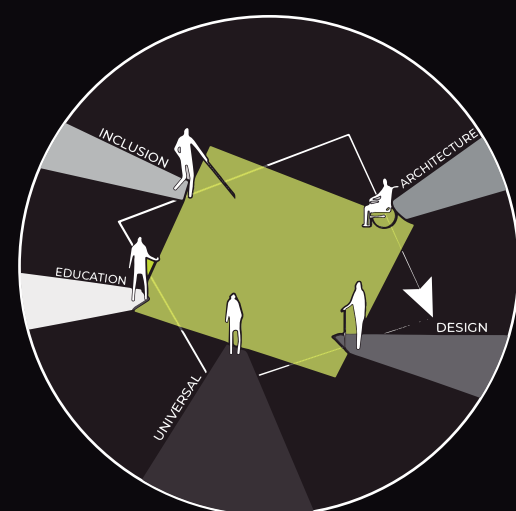




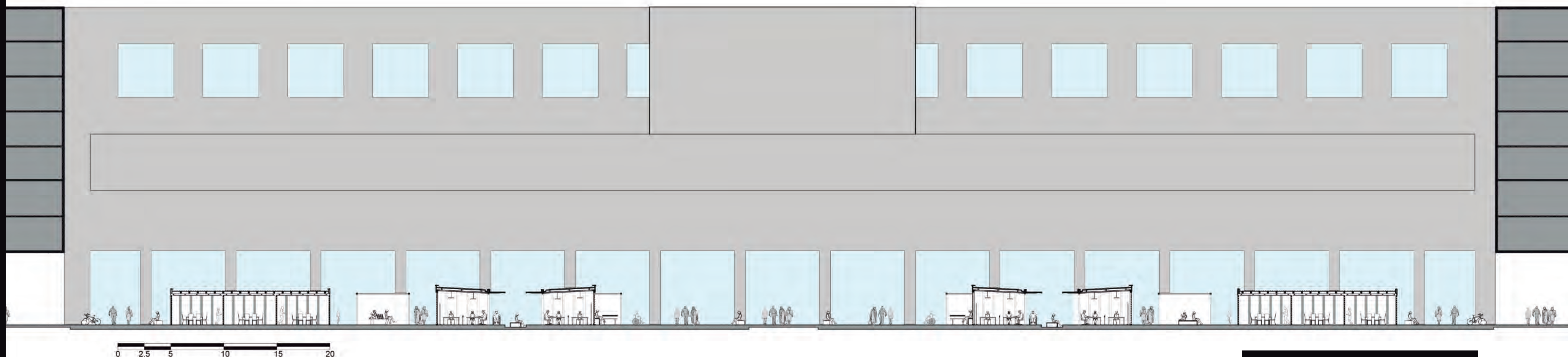
# OUR PROPOSAL

## MASTER PLAN DESIGN

Melissa Banguero Home  
Luis Felipe Sanchez



Ground Floor Plan Design



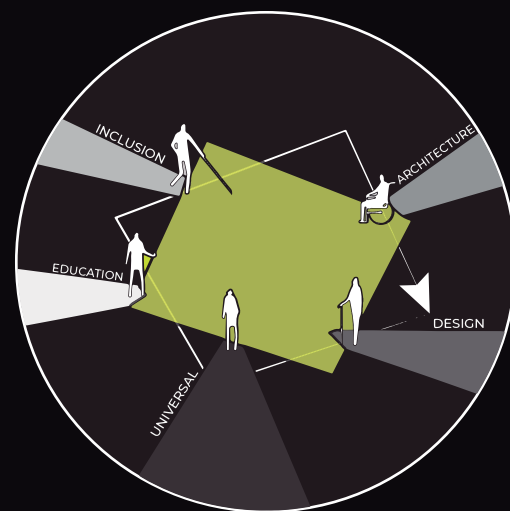
Urban Section S1



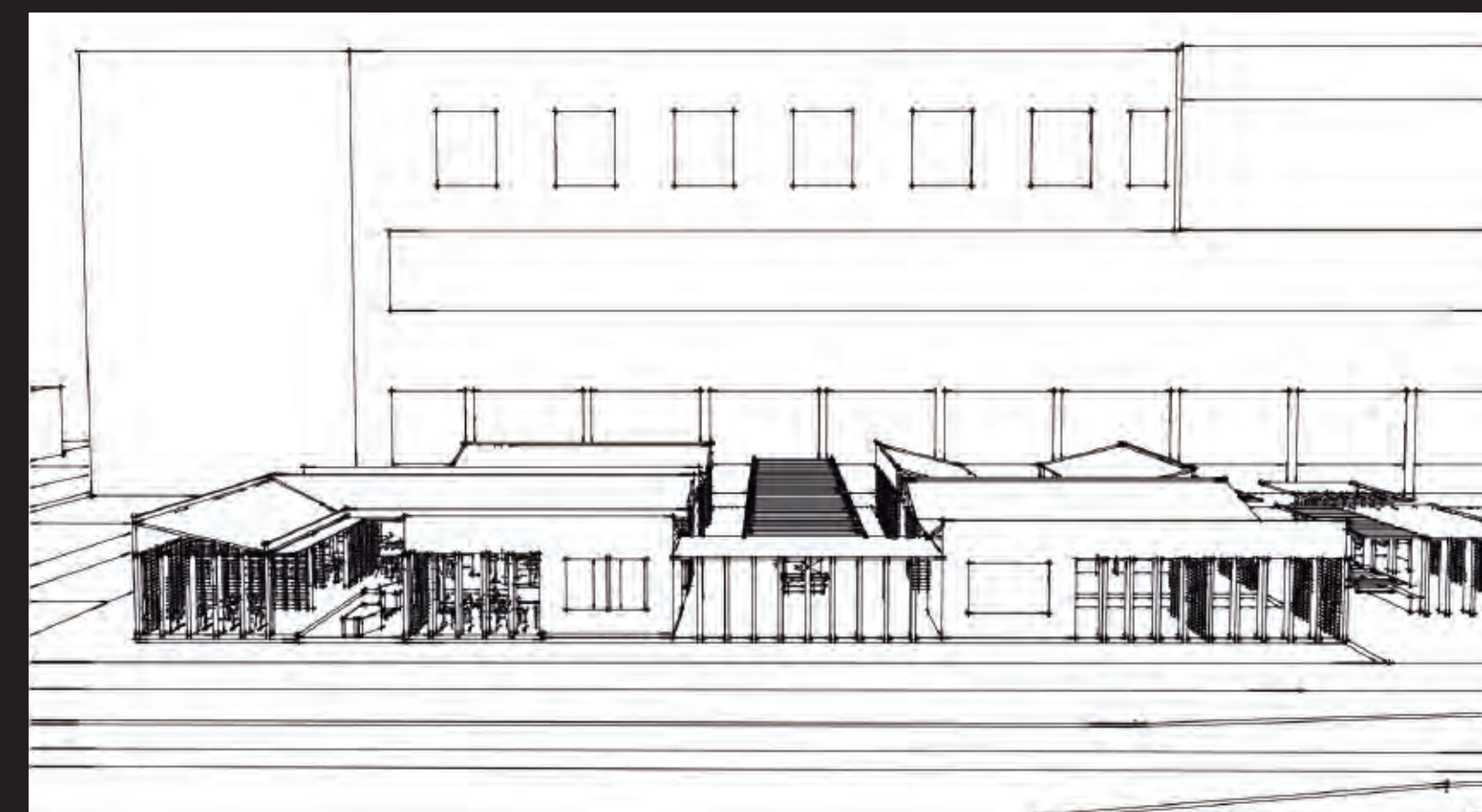
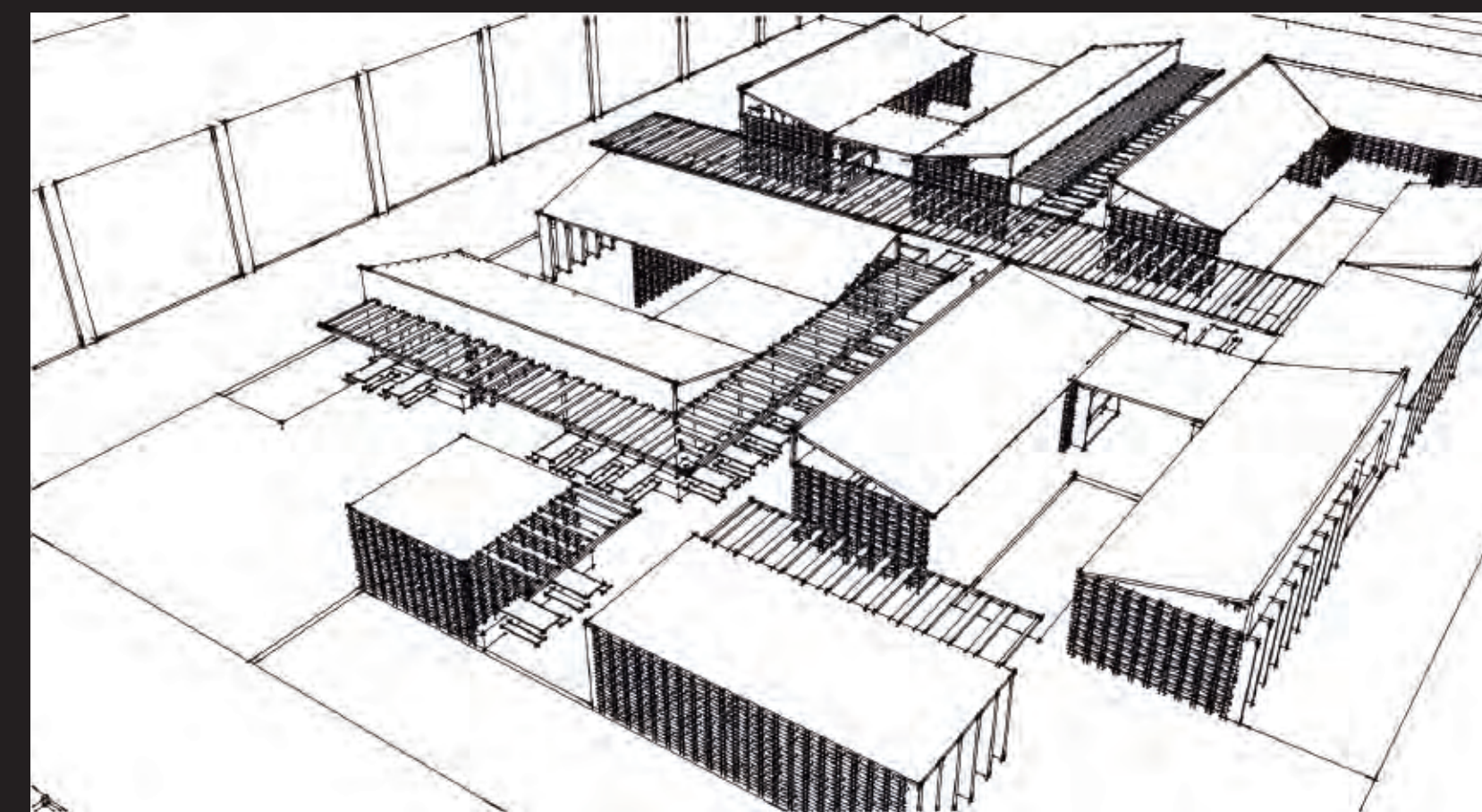
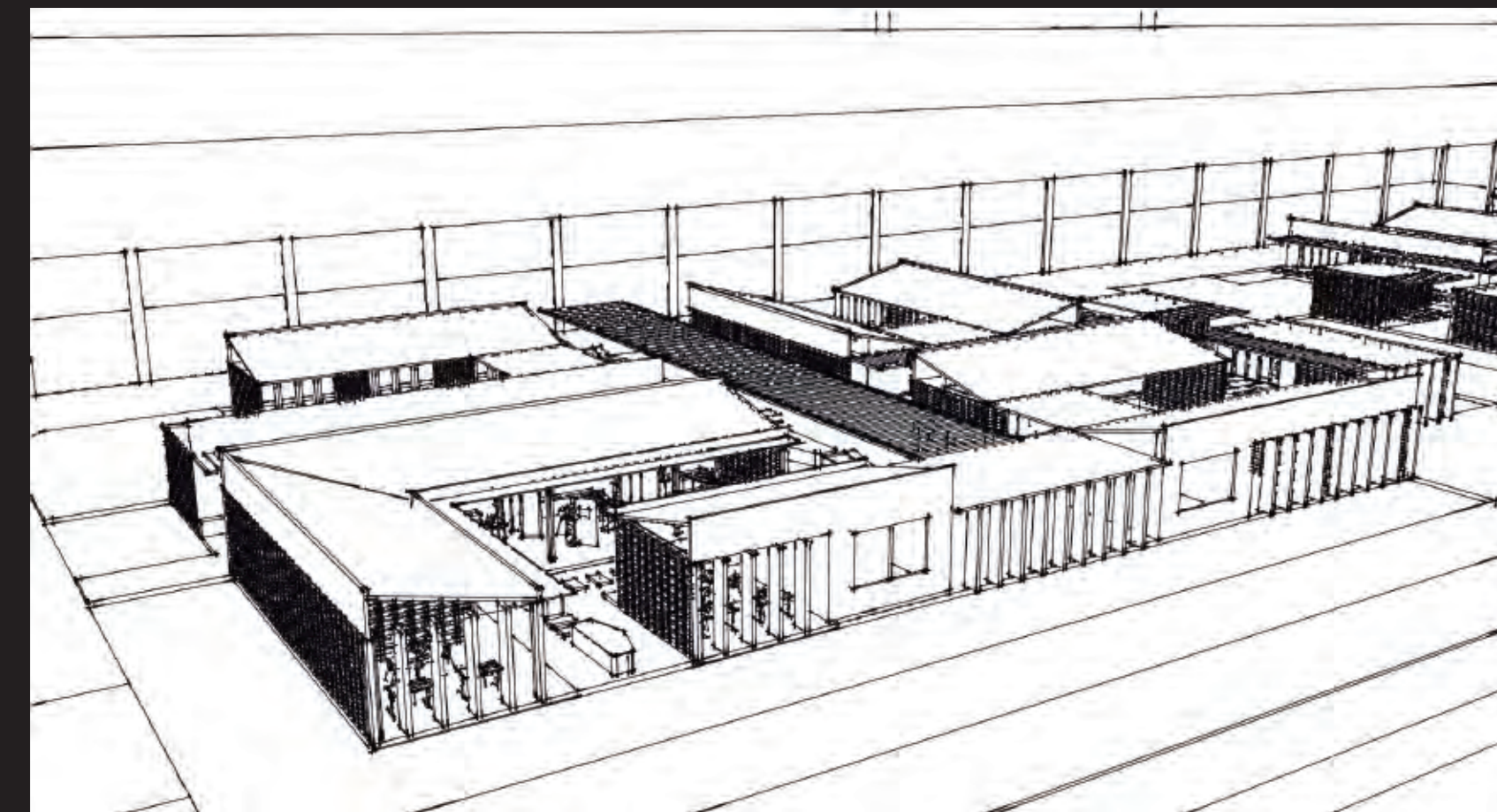
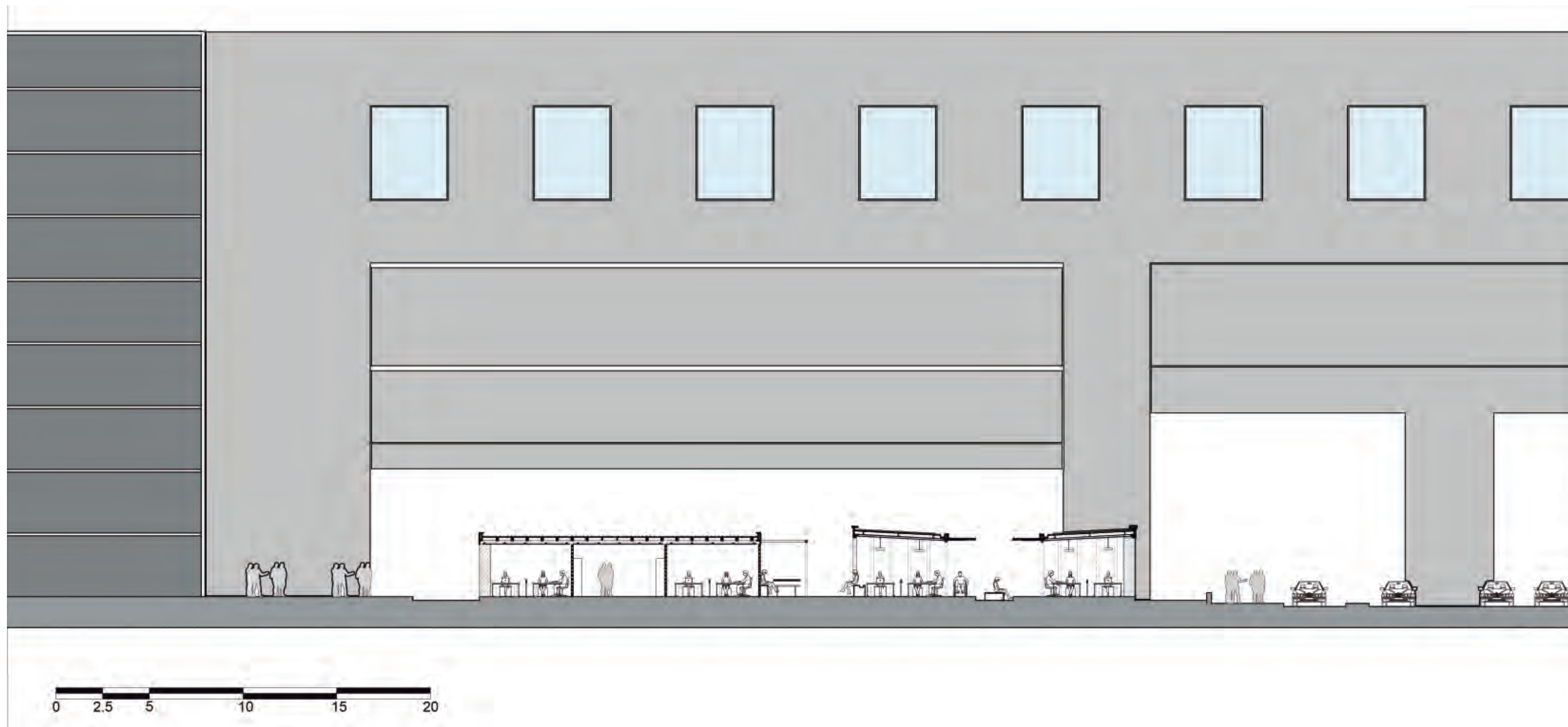
# OUR PROPOSAL

## PROJECT PERSPECTIVES

Melissa Banguero Home  
Luis Felipe Sanchez



### SECTION 3 ESC 1:250



### Detail the module

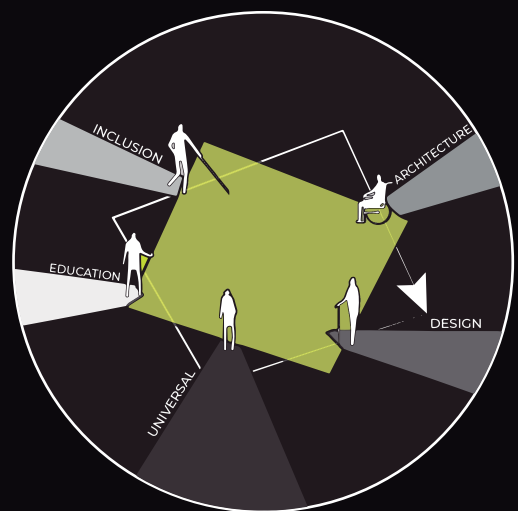
The activities in the spaces were define by the users necessities and each person has a different way of interacting with the space. We assign to each module one way of studying .But also without forgetting other users and activities such as proffesors, staff that need have meetings or a space for leisure.



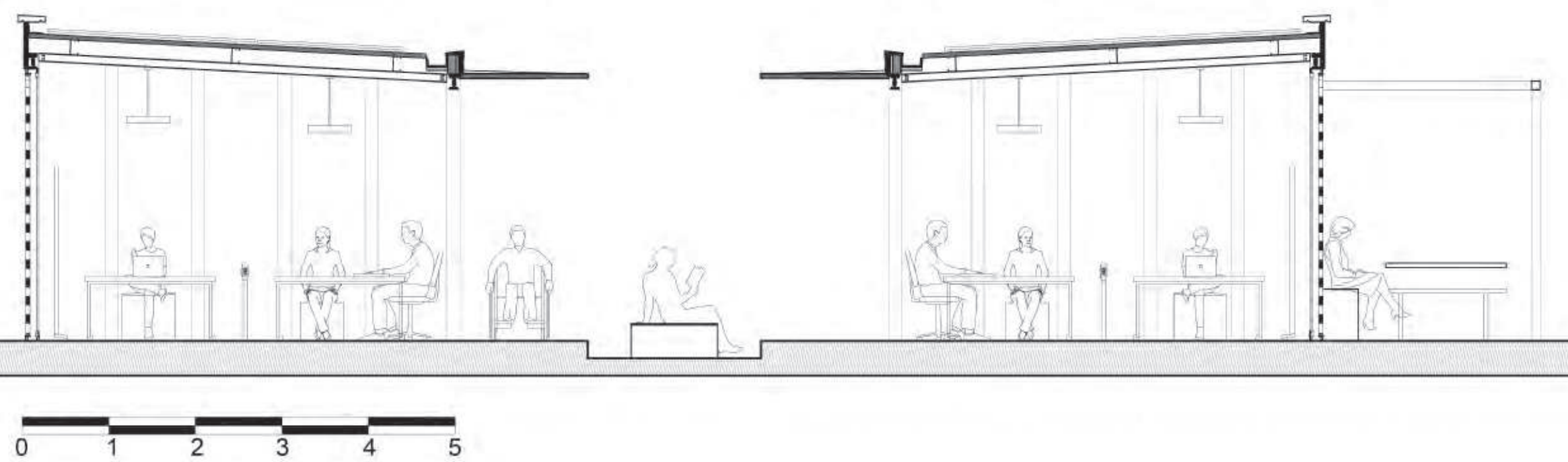
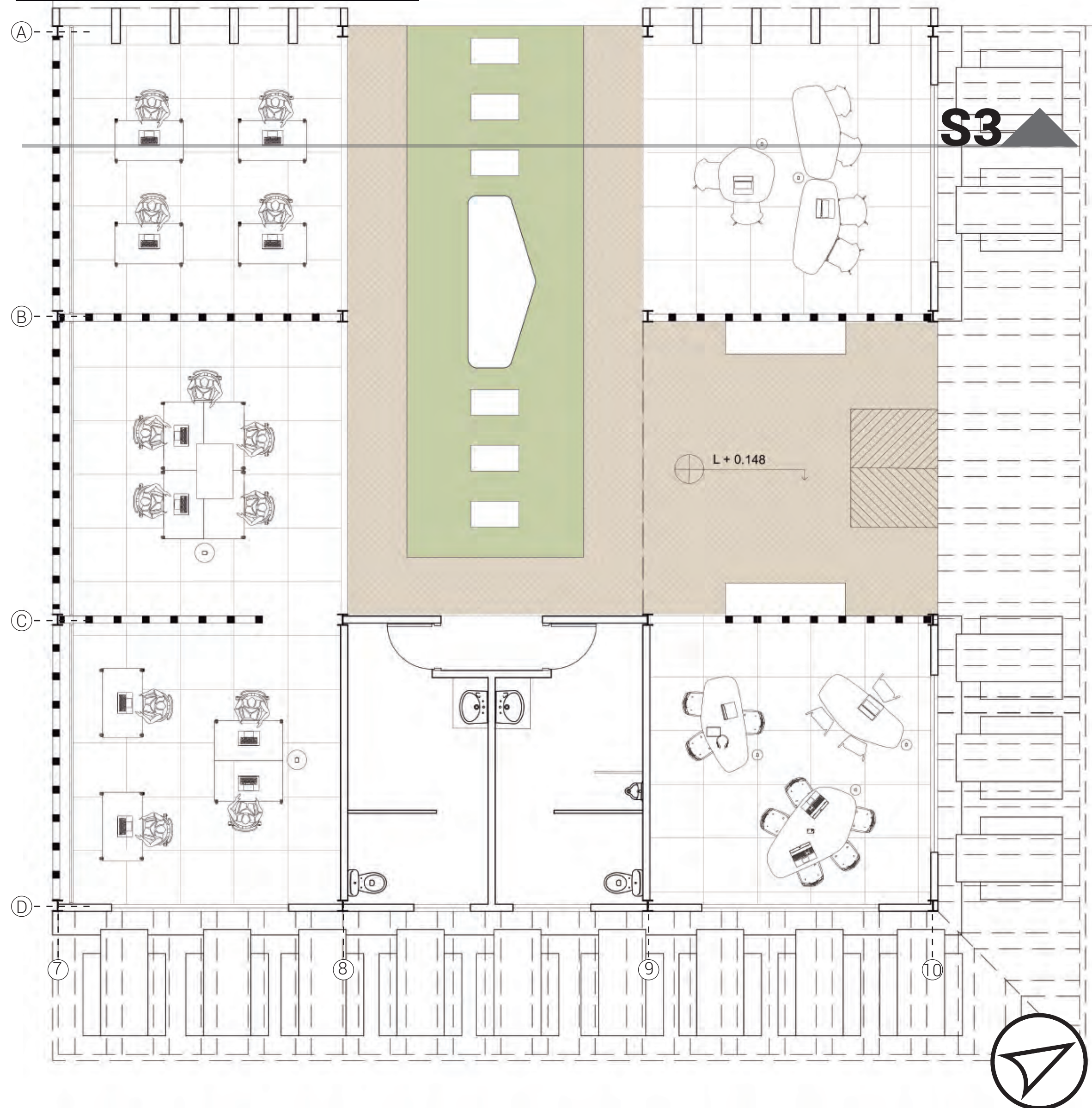
# OUR PROPOSAL

## MODULES DESIGN

Melissa Banguero Home  
Luis Felipe Sanchez

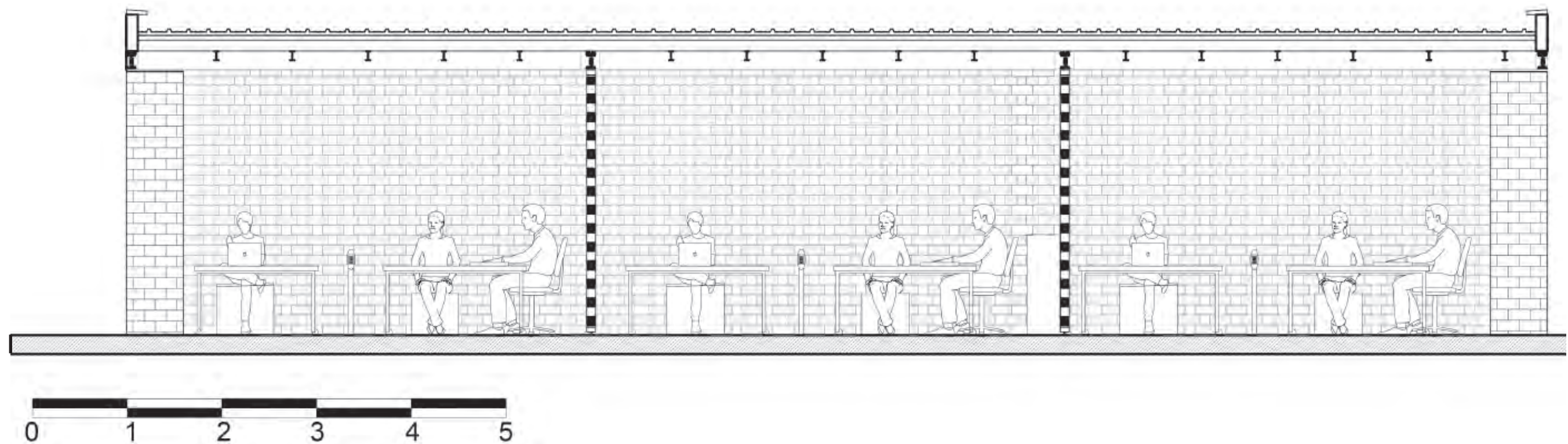
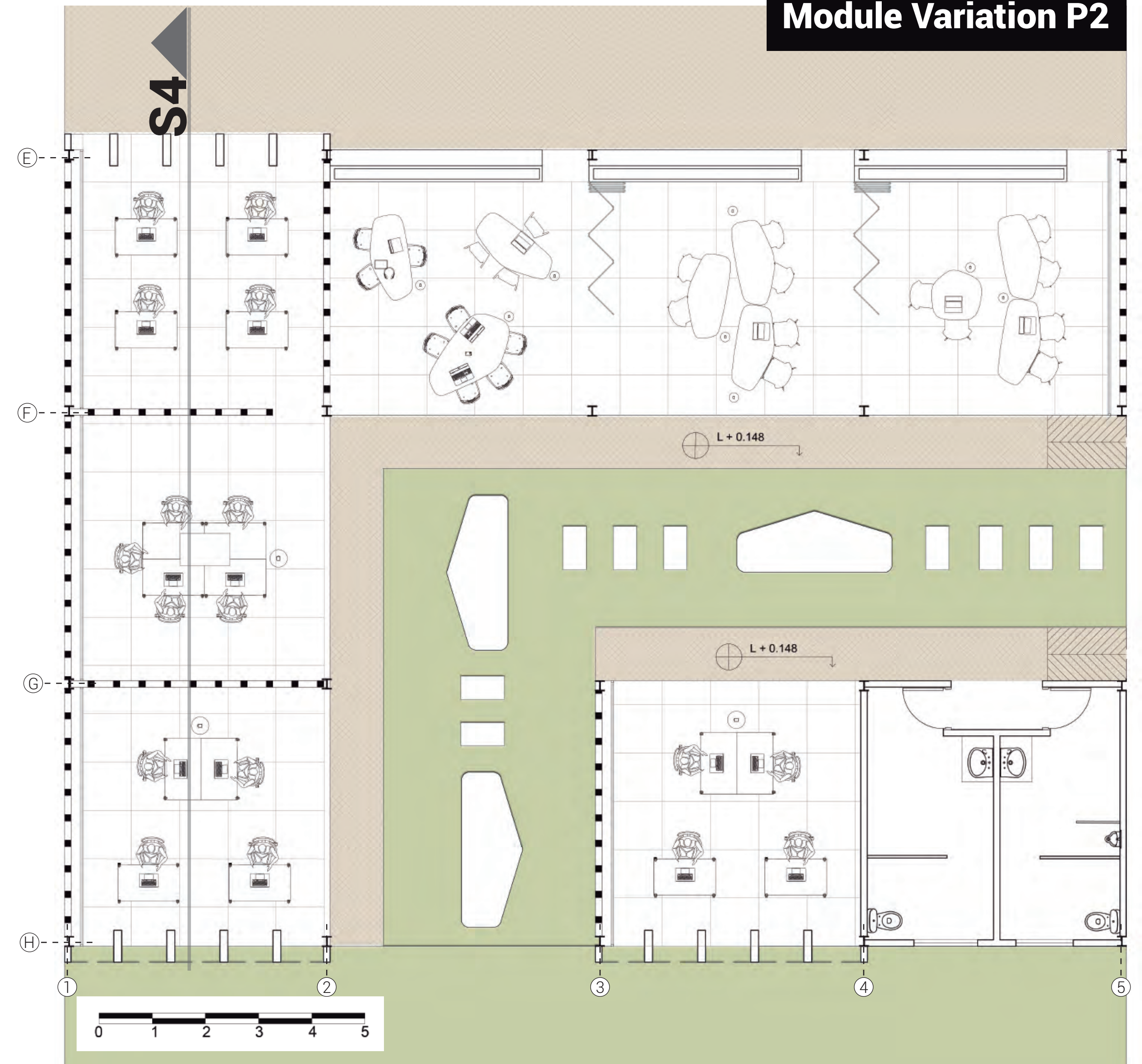


### Module Variation P1



### Section S3

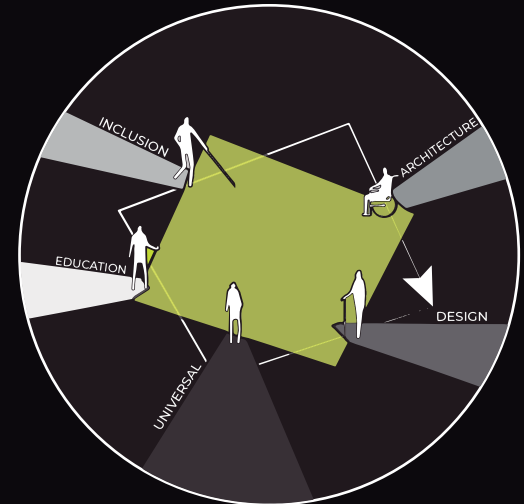
### Module Variation P2



### Section S4



Melissa Banguero Home  
Luis Felipe Sanchez  
Ideas taken from: Metalco street furniture  
[www.metalco.it](http://www.metalco.it)  
Steel case furniture solutions  
<https://www.steelcase.com/>



# Furniture Ideas

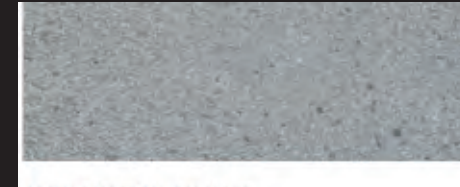
The choice of the furniture for this type of project is crucial because it depends on the use of the space. In this scenario, we decided to select the furniture according to the modules. **Furniture for individual working, for group, leisure, eating and meetings.** Always searching for prototypes that are ergonomic and comfortable, for each type we search for a style that us as students know thta will be functional.

# 8. Possible Furniture Materiality

For the materility of the furniture it will depend on the use and the place where they are.



For pergola



For circulations



For indoor furniture



For outdoor furniture

### Furniture for sitting and bike

### Group Indoor furniture

### Cover Outdoor furniture for leisure



### Individual/flexible furniture

### Cover Outdoor furniture for leisure

### Outdoor furniture

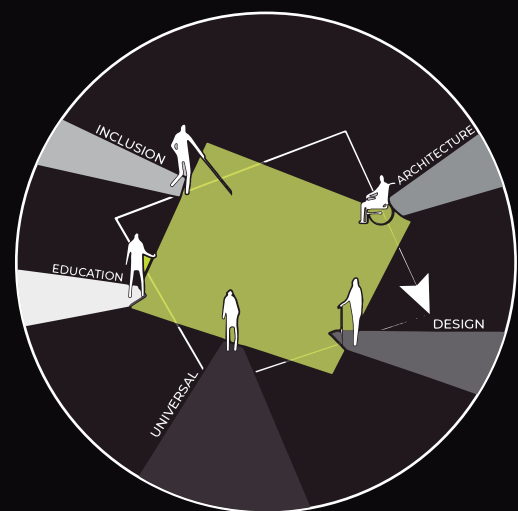
### Bike Parking



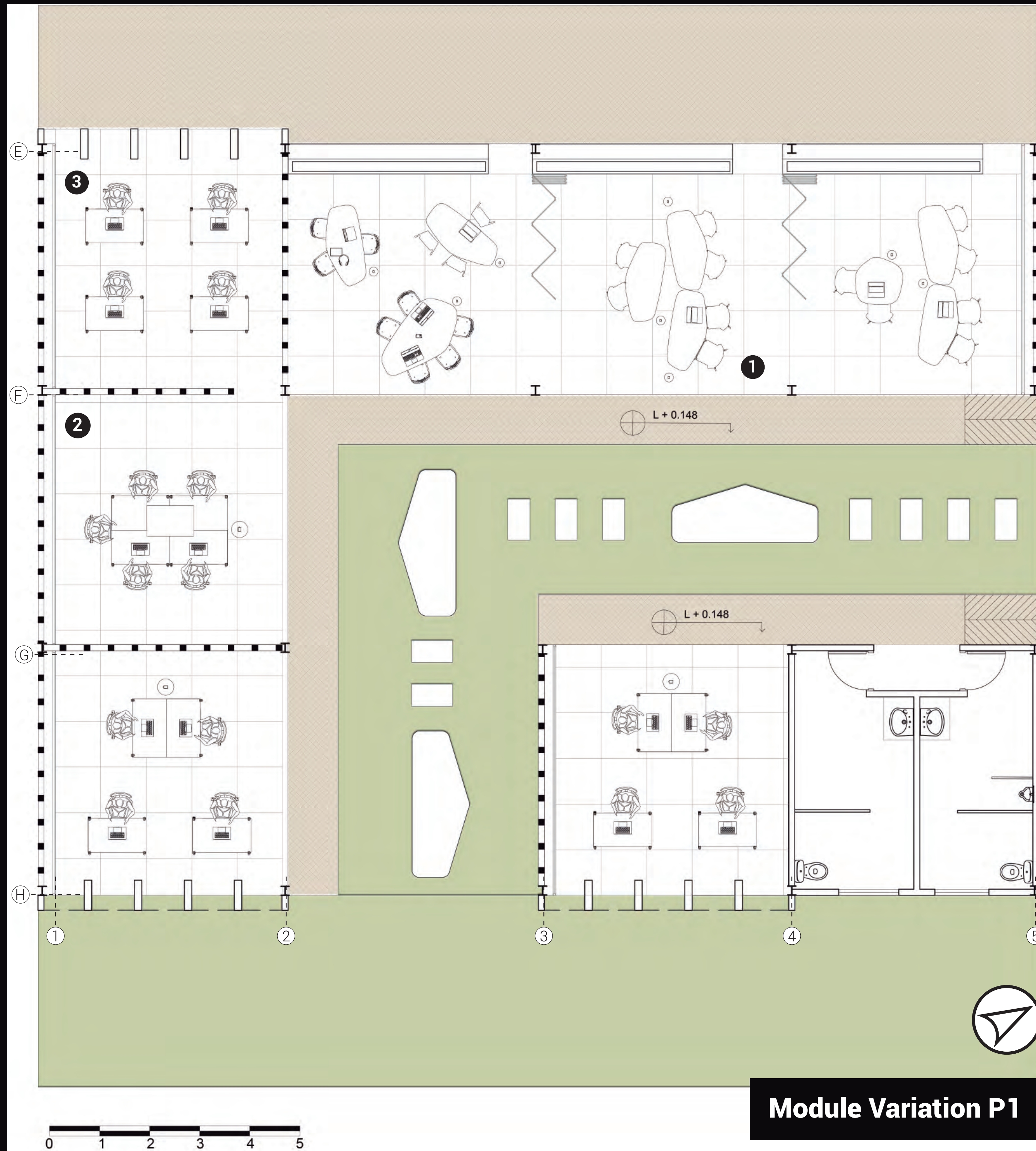
# OUR PROPOSAL

## PROJECT PERSPECTIVES

Melissa Banguero Home  
Luis Felipe Sanchez



**Indoor Furniture:** Movable and flexible to configure the space



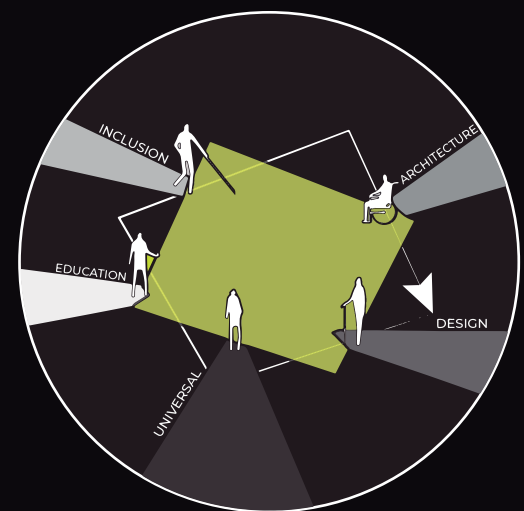
**Module Variation P1**



# OUR PROPOSAL

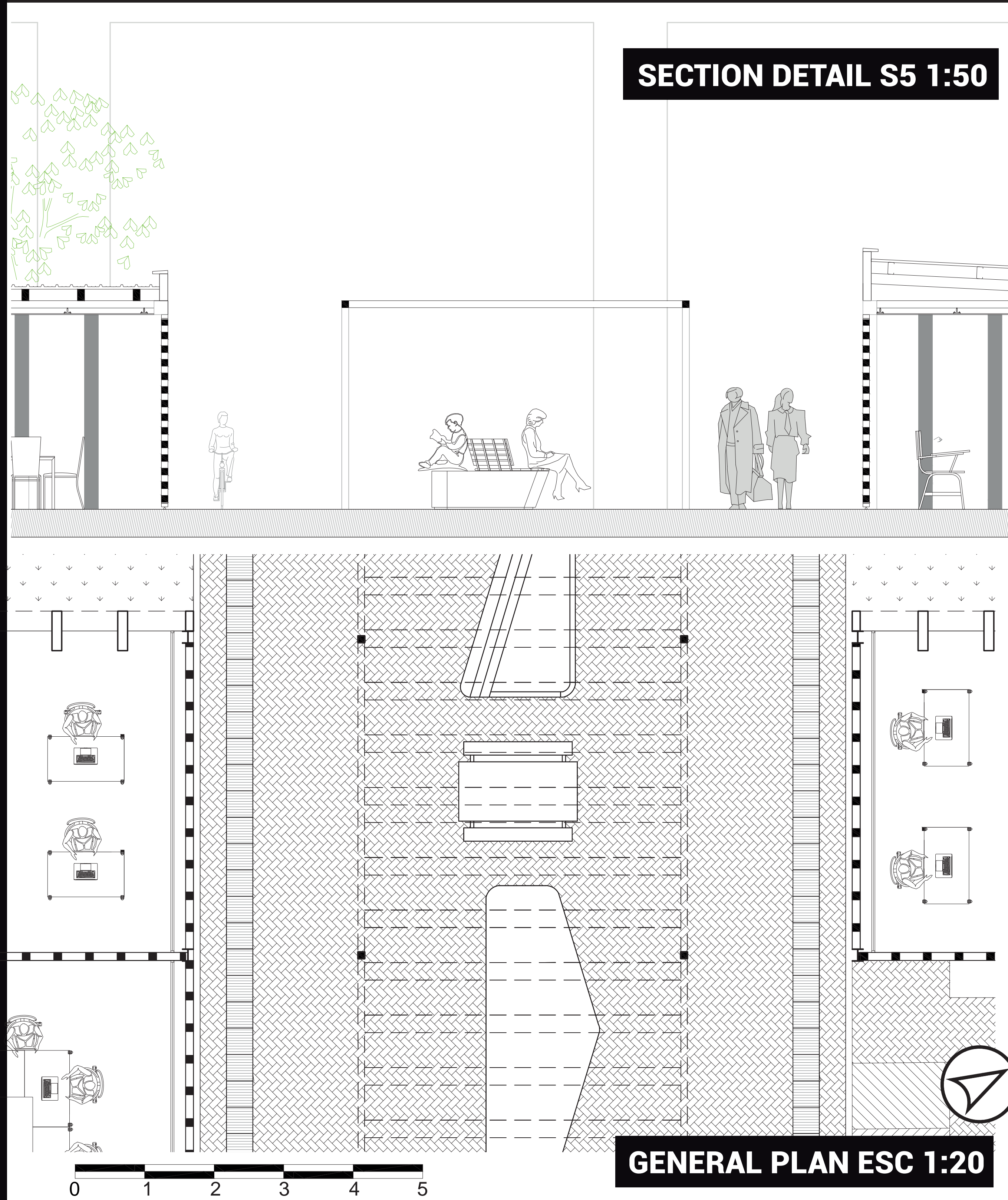
## OUTDOOR FURNITURE

Melissa Banguero Home  
Luis Felipe Sanchez



### Detail Furniture

The furniture of this project is simple, comfortable and suitable for any user. In this panel two examples of furniture are shown, one for indoor and other for indoor activities. Each one of them has their own characteristics that help to develop the activities specified by the users.





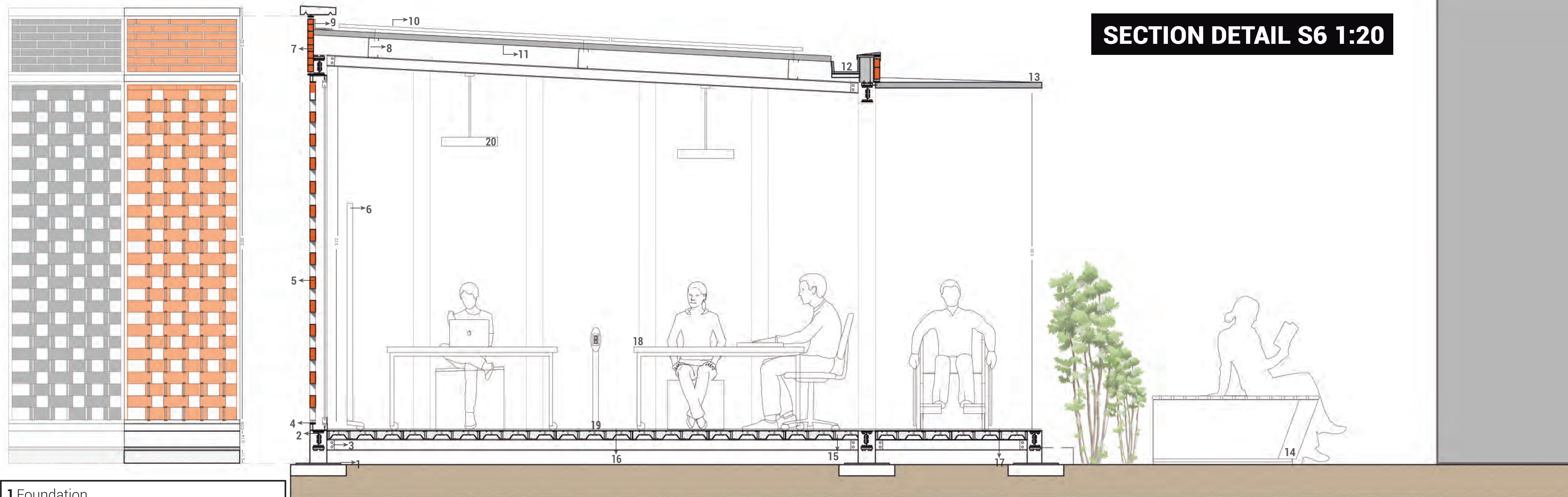
## Explaining facade and atmosphere relations

This facade strategy was decided in order to create comfort inside the space. Openwork walls are use for letting the user to have privacy but also have contact with the exterior. The light entering in the space comes in a control way without disturbing the activities inside.

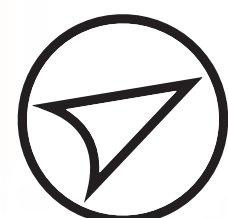
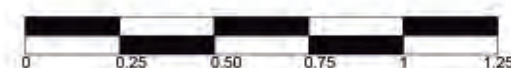


**Context**  
**Materility**

### SECTION DETAIL S6 1:20



- 1 Foundation
- 2 Metallic beam W6 x15lb/feet
- 3 Steel angle
- 4 Metallic panel frame
- 5 Panel brick 10,5/5/23cm
- 6 Exponents whiteboard and mobile display
- 7 Brick 29cm\*12cm\*6cm
- 8 Metal perlin structure in "C"
- 9 Lapel in galvanized sheet caliber
- 10 Solar panels 2.40m \*1.3m
- 11 Trapezoidal alveolar tile
- 12 Rain water channel gutter
- 13 Metal eaves
- 14 Outdoor furniture Metalco
- 15 Steel deck 75cm depth
- 16 Ceramic floor 50\*50cm light gray
- 17 Cobblestone floor
- 18 Steel case collection movable furniture
- 19 Portable power bank tower
- 20 Lighting



Melissa Banguero Home  
Luis Felipe Sanchez

